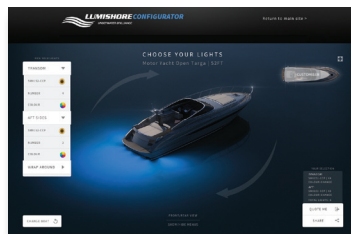




LUMISHORE

**Underwater
LED Lighting**



CONFIGURATOR

CHOOSE YOUR LIGHTING [LUMISHORE.COM/CONFIGURATOR](https://lumishore.com/configurator)

If you're unsure of exactly how many lights are right for your boat check out our exclusive online 'Configurator', which allows you to choose your boat style and then test drive all the various mounting locations, light models, quantity and color options before you buy.



Lumishore builds the brightest, most advanced, high-performance underwater LED lighting solutions for boats of all sizes from RIBs to Superyachts. Lumishore is the premier supplier of exceptionally powerful lighting systems, with the highest available light output of over 23,000 fixture lumens. All Lumishore lights, hubs and control systems are designed, developed and manufactured exclusively in Swansea, U.K. using proprietary LED technology, and are backed by Lumishore's exceptional full warranty.

Lumishore is ISO9001 certified, has ABS, RINA, DNV/GL Classification Approvals, and is the only underwater LED lighting provider with full Lloyd's Type Approval including safety critical EMI/EMC testing and compliance.

COLORS

COLOR CHANGE LIGHTS

Lumishore's award-winning EOS Series lighting systems have set a new standard for performance and control of full color underwater lighting. The best and brightest full spectrum color change lights with a limitless choice of colors, effects, modes, 'Sound-to-Light' entertainment, wireless control, iOS control, and more.

DUAL COLOR LIGHTS

'2-lights-in-1' (blue and white) in a single high-powered fixture without sacrificing brightness – both colors run at full power!

SINGLE COLOR LIGHTS

- Blue: most versatile for changing water conditions
- White: best in clear, shallow, sandy waters
- Green: best for murky, green or brown water

MOUNTING TYPES

SURFACE MOUNT (SMX)

- Transom mounting
- Typically for boats up to 45' (14 m)
- Easy to install
- Internal/built-in driver

THRU-HULL (THX)

- Transom, side or bottom mounting
- Offers most secure mounting type
- External driver

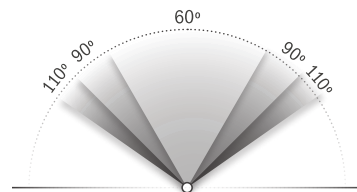
INTERCHANGEABLE THRU-HULL (TIX)

- Transom, side or bottom mounting
- Serviceable from inside hull
- Offers most secure mounting type
- Internal/built-in driver

BEAM ANGLES

Lumishore offers not only the best light intensity, but also the widest beam angles and even beam spread, to penetrate farther in the water and provide an uninterrupted halo of light around your boat.

- 60° - Narrow, focused beam
- 90° - Wide beam
- 110° - Ultra-wide beam



Underwater lighting is a vibrant component of any boating experience, further enhanced with effortless control of your lights. A standard on/off switch can be used to power your single color lights. Our additional Lumishore lighting control systems are highlighted below.

EOS controllers provide additional compatibility with your iPhone or iPad when used with the free companion Lumi-App available on iTunes. Lumi-Link allows you to control your lighting system directly from your MFD, currently compatible with specific Garmin, Raymarine, Simrad, B&G and Furuno models (See Page 15 for more information).



LIGHTING CONTROL SYSTEMS



SUPRA INSTALLATION KIT (I-CONNECT HUB & SWITCH)

- The Supra Installation Kit (i-Connect Hub & Switch) is a plug-and-play junction box and 'all-in-one' on/off & momentary switch. This enhances the available functionality of SUPRA Series lights
- Compatible with SUPRA Series lights - THX, TIX and SMX53
- Low-profile dash mount



STANDARD ON/OFF SWITCH

- Switch (customer supplied) provides basic on/off functions for ORA Series lights
- Capability for SMX23, 53, and 93
- SMX53 has optional Install Kit which includes hub and switch for some additional control options



LUMI-LINK™ COMMAND CENTER

- Lumi-Link is the world's first marine lighting API (Application Programming Interface)
- Take full control of your Lumishore lighting directly from your MFD or internet-compatible display device
- Simply connect Lumi-Link to the MFD and/or additional Display with a single plug-&-play cable
- Creates a centralized control platform for the entire vessel reducing helm clutter
- No other controllers or digital switches are necessary, but may be added for second-station control
- Required for all EOS Series light systems and optional for SUPRA Series light systems (excludes SMX23/93)



EOS STV 2204-I DISPLAY

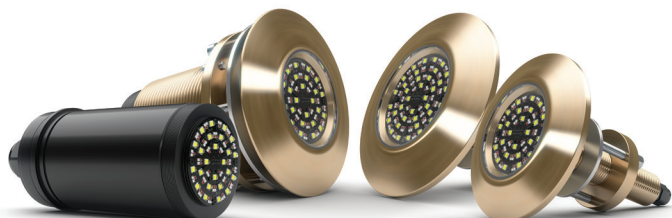
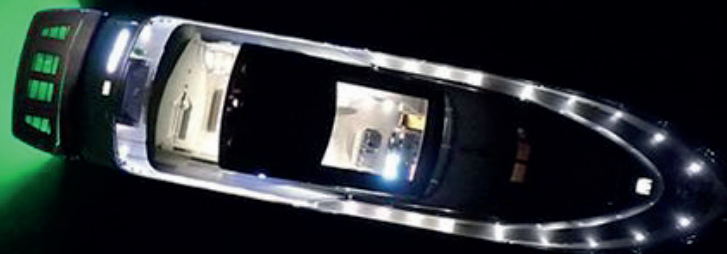
- EOS STV 2204-i is a dedicated glass-bridge full-screen display (3.5"/89mm)
- Simple click-and-play function with easy-to-navigate modern icons
- Full two-way DMX compatibility
- WiFi control via Apple, Android, or any device with a web browser and free companion Lumi-App on iTunes
- Compatible with EOS Series Thru-Hull (THX), Interchangeable Thru-Hull (TIX) and Surface Mount (SMX153 only) models
- Requires Lumi-Link Command Center



MFD INTEGRATION

- Lumi-Link allows you to control your lighting system directly from your MFD
- Lumi-Link Compatible MFD models*:
Garmin - OneHelm™
Raymarine - Axiom and Axiom Pro
Simrad - NSO EVO3 and EVO2, NSS EVO3 and selected Go models**
B&G - Zeus3 Glass Helm, Zeus3 and Vulcan
Furuno - models TBC
 * Check compatibility of MFD prior to purchase
 ** Go7 XSR/Go9/Go12 compatible
- Requires Lumi-Link Command Center

**Giving you light
as you enter the dark**



EOS TIX803

EOS THX1603

EOS THX803



COLOR CHANGE THRU-HULL LIGHTING

Lumishore's EOS Thru-Hull lighting systems are the undisputed leaders in high-performance full spectrum underwater lights with unmatched performance, the widest beam angles, and the brightest color changing lights on the market. Available in both standard fit and interchangeable thru-hull models with brightness levels up to 17,000 fixture lumens. Control colors, modes and special effects with the EOS STV 2204-i Display and/or directly from your MFD with Lumi-Link.

- **Preprogrammed synchronized light sequencing – all lights, modes, colors**
- **Easy 'Sound-to-Light' integration with on-board stereo**
- **Lumi-Link compatible for direct control from your compatible MFD and/or display**
- **WiFi control via Apple, Android, or any device with a web browser**

LUMISHORE**LUMI-LINK™****THRU-HULL - TIX403, THX/TIX803, THX/TIX1603**

EOS Thru-hull fittings are the choice of avid boaters around the world. THX models are standard 1" fittings with an external driver. TIX models have an internal driver and can be serviced from inside the hull without hauling the vessel. Both models are flush fit, feature an ultra-wide 110° beam angle, and are suitable for transom, side and bottom mounting. Automatic light discovery & setup. Plug-and-play connectors.

	EOS TIX403	EOS TIX/THX803	EOS TIX/THX1603
LUMENS/FIXTURE LUMENS	9,000/4,000	23,625/10,500	34,875/15,500
Beam Angle (Degrees)	110°	110°	110°
CURRENT (12/24 V DC)	2.6A / 1.5A	8.8A / 4.4A	6.5A (24 V DC only)
Recommended Boat Size	7.5-25m/25-80ft	7.5-100m/25-330ft	7.5-100m/25-330ft

See Specification Sheets for full details: www.lumishore.com/press-room

COMPATIBLE CONTROLLERS/DISPLAYS

Take full control of your EOS lighting system with the intuitive EOS STV 2204-i Display and/or directly from your compatible MFD. Lumi-Link Command Center required.



EOS STV 2204-i



MFD

Stand
out wherever
your voyage takes you



RGBW SMX93

EOS SMX153



COLOR CHANGE SURFACE MOUNT LIGHTING

Lumishore's new marine bronze color-change surface mount lights allow you to easily build an underwater lighting system that perfectly matches your interest and lifestyle. Two compact bronze lights with installation and control options to best suit your boat:

- **SMX93** uses a standard on/off switch; toggle to freeze or cycle colors
- **SMX153** provides full color control with a whole host of features, such as Wi-Fi control, 'Sound-to-Light' entertainment, and synchronized fade, sweep and strobe directly from your compatible MFD and/or display
- **Wide 90° beam angle**



SURFACE MOUNT - SMX93 & SMX153

Lumishore's new bronze surface mount lights are built with the same high-quality marine grade bronze and borosilicate glass lens as its thru-hull range. At just 70-95mm (2-3/4" - 3-3/4") diameter, they can be fitted nearly anywhere on the hull including stepped hulls, transoms, and hull sides of nearly any type of boat. Wide 90° beam of light. Internal driver. Easy installation. Plug-and-play connectors. 2-year full warranty.

	RGBW SMX93	EOS SMX153
LUMENS/FIXTURE LUMENS	11,475/5,100	12,375/5,500
Beam Angle (Degrees)	90°	90°
CURRENT (12/24 V DC)	3.5A / 1.75A	4.0A / 2.0A
Recommended Boat Size	7.5m/25ft	15m/50ft

See Specification Sheets for full details: www.lumishore.com/press-room

COMPATIBLE CONTROLLERS/DISPLAYS

Control SMX93 lights with a standard user-supplied on/off switch to toggle on cycled colors. Control SMX153 lights with the intuitive EOS STV 2204-i Display and/or directly from your compatible MFD. Lumi-Link Command Center required.



On/Off Switch
SMX93



EOS STV 2204-i

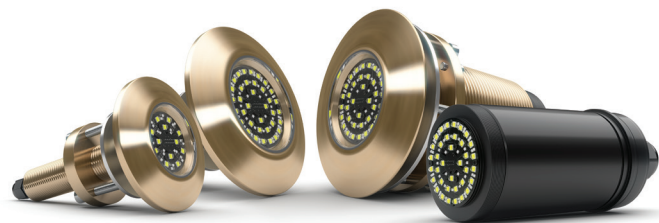


MFD

SMX153



**A bright future
is waiting for you**



SUPRA THX403

SUPRA THX803

SUPRA TIX803



Dual
Color



Color
Fade



Fixed &
Random
Strobe



Brightness
Adjust



Wi-Fi



Lumi-Link
Compatible

DUAL COLOR THRU-HULL LIGHTING

'2-lights-in-1' (blue & white) in a single high-powered fixture without sacrificing brightness – both colors run at full power! Available in both standard fit and interchangeable thru-hull models with brightness levels up to 17,000 fixture lumens. Easily switch colors, fade colors, adjust brightness, and strobe in two speeds.

- **Full-power Dual-colored lights without sacrificing brightness**
- **Choice of mounting types: Thru-Hull (THX) or Interchangeable Thru-Hull (TIX)**
- **6,800-17,000 tested and proven fixture lumens**
- **Ultra-wide 110° beam angle for the ultimate flood effect**
- **Lumi-Link compatible for direct control from your MFD and/or display**

LUMISHORE

LUMI-LINK™

THRU-HULL - THX/TIX403, THX/TIX803, THX/TIX1603

SUPRA Thru-Hull lights are designed for owners who prefer the integrity of a bronze thru-hull installation. THX models are standard 1" fittings with an external driver. TIX models have an internal driver and can be serviced from inside the hull without hauling the vessel. Both models are flush fit, feature an ultra-wide 110° beam angle, and are suitable for transom, side and bottom mounting. Plug-and-play connectors. 3-year full warranty.

	SUPRA TIX/THX403	SUPRA TIX/THX803	SUPRA TIX/THX1603
LUMENS/FIXTURE LUMENS	15,300/6,800	27,000/12,000	38,250/17,000
Beam Angle (Degrees)	110°	110°	110°
CURRENT (12/24 V DC)	6.0A / 3.0A	8.8A / 4.4A	6.5A (24V DC only)
Recommended Boat Size	7.5-25m/25-80ft	7.5-100m/25-330ft	7.5-100m/25-330ft

See Specification Sheets for full details: www.lumishore.com/press-room

COMPATIBLE CONTROLLERS/DISPLAYS

Control SUPRA Series THX/TIX lights with the SUPRA i-Connect Hub & Switch – a low-profile, dash-mounted all-in-one on/off/momentary switch and plug-and-play junction box designed for ease of installation. For direct control from your compatible MFD add the SUPRA Lumi-Link Bridge Module.



i-Connect Hub & Switch



MFD



The fun
begins at sunset



SUPRA SMX23

SUPRA SMX53



Dual
Color



Color
Fade



Fixed &
Random
Strobe



Brightness
Adjust



Wi-Fi



Lumi-Link
Compatible

DUAL COLOR SURFACE MOUNT LIGHTING

'2-lights-in-1', blue & white, in a single high-powered fixture without sacrificing brightness – both colors run at full power! Two compact bronze lights to choose from to best suit your boat:

- **SMX23** uses a standard on/off switch; toggle to select color, random fade and strobe
- **SMX53** also uses a standard on/off switch and for additional features and effects such as Wi-Fi control and synchronized fade and strobe choose the i-Connect Hub & Switch, then add Lumi-Link for direct control from your MFD
- Full-power Dual-colored lights without sacrificing brightness
- 2,500-6,100 tested and proven fixture lumens
- Wide 90° beam angle



LUMISHORE

LUMI@LINK

SURFACE MOUNT - SMX23, SMX53

Lumishore's new bronze surface mount lights are built with the same high-quality marine grade bronze and borosilicate glass lens as its thru-hull range. At just 70-95mm (2-3/4" - 3-3/4") diameter, they can be fitted nearly anywhere on the hull including stepped hulls, transoms, and hull sides of nearly any type of boat. Wide 90° beam of light. Internal driver. Easy installation. Plug-and-play connectors. 2-year full warranty.

	SUPRA SMX23	SUPRA SMX53
LUMENS/FIXTURE LUMENS	5,625/2,500	13,725/6,100
Beam Angle (Degrees)	90°	90°
CURRENT (12/24 V DC)	2.5A (12 V DC only)	4.5A / 2.5A
Recommended Boat Size	7.5m/25ft	15m/50ft

See Specification Sheets for full details: www.lumishore.com/press-room

COMPATIBLE CONTROLLERS/DISPLAYS

Control SMX23 lights with a standard user-supplied on/off switch to toggle on colors and effects. Control SMX53 lights with a standard on/off switch or choose the SUPRA i-Connect Hub & Switch for additional features. For direct control from your compatible MFD add the SUPRA Lumi-Link Bridge Module.



On/Off Switch

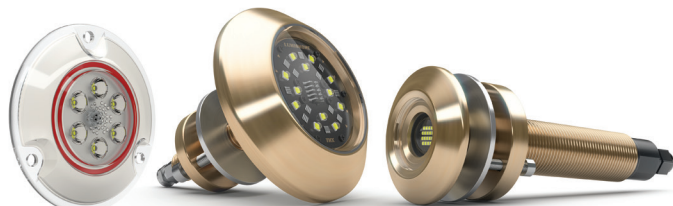


i-Connect Hub & Switch



MFD

Boating
will
never be the same



ORA SMX11

ORA THX203

ORA TIX202



SINGLE COLOR LIGHTING

ORA Series single-colored lights offer unparalleled performance for small to medium size boats. SMX11 is Lumishore's smallest surface mount light and is easy to install. TIX202 is the world's slimmest Interchangeable Thru-Hull light that can be serviced from inside the hull without hauling. THX203 is the world's first ultra-slim thru-hull, ideal for boat owners seeking the security of a thru-hull fitting with the hull cut-out of a surface mount.

- **Single-colored lights: white, blue, or green**
- **Choice of mounting types: Surface Mount (SMX), Thru-Hull (THX) or Interchangeable Thru-Hull (TIX)**
- **1,100-5,600 tested and proven fixture lumens**
- **Focused 60° or ultra-wide 110° beam angle**



SURFACE MOUNT - SMX11

Specifically designed for smaller boats, ORA SMX11 offers unmatched light output and optics for a light of its size, available in blue, white or green. Featuring 1,100 fixture lumens and a focused 60° beam, SMX11 is suitable for transom mounting. Low profile. Easy installation. Internal driver. Powered by a standard user-supplied on/off switch. 1-year full warranty.

ORA SMX11

LUMENS/FIXTURE LUMENS	2,475/1,100
Beam Angle (Degrees)	60°
CURRENT (12/24 V DC)	1A (12 V DC only)
Recommended Boat Size	Up to 7.5m/25ft



On/Off Switch

THRU-HULL - TIX202, THX203

TIX202 provides 4,100 fixture lumens in a focused 60° beam, available in blue, white or green with a 3-year full warranty. THX203 yields 5,600 fixture lumens in a 110° beam, available in blue or white with a 2-year warranty. Both models are suitable for transom, side hull or bottom installations. Internal driver. Powered by a standard user-supplied on/off switch.

ORA TIX202

9,225/4,100	12,600/5,600
60°	110°
4.0A / 1.9A	4.9A / 2.4A
7.5-25m/25-80ft	7.5-25m/25-80ft

ORA THX203



On/Off Switch

**A whole new world
just below your waterline**



LUMI-CAM TIX402



**FULL
HD**

Full HD
1080P

WDR

Wide
Dynamic
Range

**3D
DNR**

Dynamic
Noise
Reduction



Automatic
Low Light
Mode

**3.6
MM**

Fixed
Focus



Viewing
Angle



HD-SDI
Output
(BNC)



Composite
Output
(BNC)

LUMI-CAM UNDERWATER HD CAMERA

Let Lumishore show you a whole new world just below your waterline. Lumi-Cam brings all the amazing detail of magnificent sea life and beautiful underwater terrain to life in vivid high-definition color. Its compact 'flush-fit' design enables Lumi-Cam to be mounted nearly anywhere on the hull. Add underwater lighting and attract even more marine life around your boat. Ideal for prop inspection and tournament catch and release video. 12V DC only.

- The world's smallest Full HD Mega Pixel (1080p) underwater camera
- Interchangeable Thru-Hull - serviceable from inside the hull without hauling
- HD-SDI or Composite Output (BNC) to compatible MFD, plotter or monitor
- Wide Dynamic Range (WDR) and Automatic Low Light Mode
- 3.6mm Fixed Focus

LUMISHORE**LUMI-LINK™**

LUMI-LINK PLUG-&-PLAY MFD INTEGRATION

Designed for boaters to take full control of their Lumishore EOS or SUPRA lighting directly from their MFD with award-winning functionality. Select any color from the touchscreen color palette easily, adjust the intensity, or choose from any one of the many in-built effects like strobe, sweep, cycle or 'Sound-to-Light'.

- Take full control of your Lumishore lighting system directly from your compatible MFD
- Connect Lumi-Link to the MFD with a single plug-&-play cable
- Creates a centralized control platform, reduces helm clutter
- No other controllers or digital switches are necessary, but may be added for second-station control
- Currently compatible with Garmin (OneHelm™), Raymarine (Axiom and Axiom Pro), Simrad (NSO EV03 and EV02, NSS EV03 and selected Go models), B&G (Zeus3 Glass Helm, Zeus3 and Vulcan) and Furuno (models TBC)

GARMIN**Raymarine****SIMRAD****B&G****FURUNO**

LUMI-LINK BRIDGE & COMMAND CENTER

Lumi-Link connects to your MFD with a single plug-&-play cable from its concealed black box controller and you're done! The device is recognized and the Lumishore icon is displayed. Lumi-Link will be available on a range of MFD display sizes and will auto-scale and adjust its size when viewed on a split screen/combo page.



SUPRA Bridge

Lumi-Link
Command Center

DEALER STAMP

Unit 2, Technium 1, Kings Road, Swansea, SA1 8PH, UK
+44 (0)1792 398500 | Info@Lumishore.com

7137 24th Court East, Sarasota, FL 34243, USA
(941) 405-3302 | Sales@LumishoreUSA.com

Published 2019

Specifications subject to change
without notice. Download the most
current product information and
installation guides on our website.

LUMISHORE.COM

